

Dorin K 4500 CS (x2) & H 4000 CS (x1) deep freeze package

Specifications

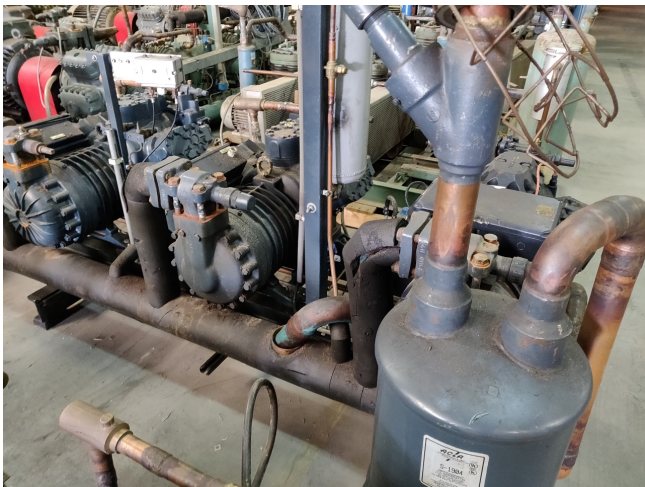
Brand	Dorin
Type	K 4500 CS (x2) & H 4000 CS (x1) deep freeze package
Refrigerant	Freon
kW at -5°C/+40°C	250.83
kW at -10°C/+40°C	207.59
kW at -20°C/+40°C	137.64
kW at -30°C/+40°C	86.03
kW at -40°C/+40°C	48.65
On steel base frame	✓
Pressure safety switches	✓
Hp/Lp/Op	
Liquid receiver	✓
Oil separator	✓
Remarks	Temperature based on condensing temperature of 45°C not 40°C
Package / Rack	✓
Stock	1

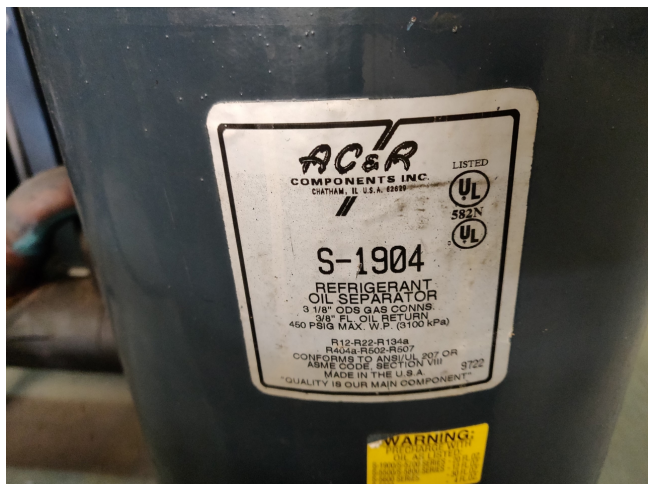


Description

Used Dorin K 4500 CS (x2) & H 4000 CS (x1) deep freeze package

Used Dorin compressor package with compressors K 4500 CS & H 4000 CS for deep freeze installations. *Why choose for HOSBV? Were not only the largest used refrigeration specialist in Europe, but also, we deliver all equipment including an extensive test, warranty and industrial cleaning. Optional we can arrange the logistics.





RESA FRIGORIFERA ED ASSORBIMENTO

PERFORMANCE DATA
Q = REFR. CAPACITY (WATT)

R404A/R507

DONNÉES DE PUISSANCE

LEISTUNGSWERTE
P = POWER INPUT (KW)

Modello Model Modell	T. cond. Cond. temp. °C	Temperature Evapor. - Evaporating temperatur. - Temp. Evapor. - Verdampfungstemp.													
		°C													
		Q	P	+10°	+5°	0°	-5°	-10°	-15°	-20°	-25°	-30°	-35°	-40°	
K2500CB	+35°	W													
		kW													
K3000CC	+45°	W													
		kW													
K3000CS	+35°	W	109610	92530	77670	64720	53480	43750	35360						
		kW	20,6	21,2	21,1	20,4	19,25	17,8	16,2						
K3500CC	+45°	W	92680	78210	65550	54490	44860	36510	29300						
		kW	26,3	25,7	24,6	23,1	21,3	19,3	17,2						
K3500CS	+35°	W													
		kW													
K3500CB	+45°	W													
		kW													
K4000CC	+35°	W	135850	114950	96730	80870	67110	55200	44920						
		kW	33,6	31,7	29,6	27,9	26	24,1	21,9						
K4000CB	+45°	W	113470	96050	80820	67510	55920	45870	37200						
		kW	38,5	36,1	33,4	31	28,6	26	23,5						
K4500CS	+35°	W													
		kW													
K4500CB	+45°	W													
		kW													
K4700CC	+35°	W	155620	131680	110810	92650	76880	63220	51460						
		kW	38,5	36,3	34	32	29,8	27,2	25,2						
K4700CB	+45°	W	129990	110030	92590	77340	64060	52550	42620						
		kW	44,1	41,3	38,3	35,5	32,7	29,9	26,9						
K5400CS	+35°	W													
		kW													
K5400CB	+45°	W													
		kW													
K64700CS	+35°	W													
		kW													
K64700CB	+45°	W													
		kW													
K64700CS	+35°	W													
		kW													
K64700CB	+45°	W													
		kW													
K64700CS	+35°	W													
		kW													
K64700CB	+45°	W													
		kW													

COMPRESORES SEMIHERMÉTICOS



Capacidad W.			R-404A/R-507													
Código	Modelo	Temp. Cond.	C			S			B			X				
			+10°C	+5°C	0°C	-5°C	-10°C	-15°C	-20°C	-25°C	-30°C	-35°C	-40°C			
CO0054-D	H-2000 CS	+35°C				55,720	46,090	33,720	24,290	19,020	14,540	10,760				
		+45°C				46,960	38,650	31,460	25,280	19,990	15,480	11,630	8,330			
CO0055-D	H-2500 CC	+35°C	93,880	79,350	66,530	55,280	45,470	36,970	29,660	23,400	18,060	13,520	9,640			
		+45°C	79,500	67,010	56,040	46,470	38,150	30,960	24,770	19,450	14,870	10,900	7,410			
CO0056-D	H-2500 CS	+35°C				62,480	51,690	42,290	34,170	27,190	21,230	16,160	11,860			
		+45°C				52,620	43,330	35,370	28,500	22,590	17,530	13,170	9,400			
CO0057-D	H-3000 CC	+35°C	105,300	89,090	74,780	62,230	51,280	41,790	33,610	26,610	20,640	15,540	11,180			
		+45°C	89,460	75,480	63,200	52,470	43,140	35,070	28,120	22,130	16,960	12,470	8,820			
CO0058-D	H-2700 CS	+35°C				66,860	55,160	44,980	36,200	28,680	22,280	16,850	12,270			
		+45°C				56,780	46,610	37,810	30,240	23,770	18,260	13,560	9,550			
CO0059-D	H-3200 CC	+35°C	115,770	97,700	81,750	67,760	55,560	45,010	35,920	28,150	21,530	15,900	11,080			
		+45°C	98,070	82,470	68,770	56,820	46,450	37,500	29,810	23,210	17,550	12,660	8,370			
CO0060-D	H-2900 CS	+35°C				75,290	62,120	50,680	40,810	32,360	25,180	19,100	13,980			
		+45°C				63,120	51,930	42,260	33,940	26,810	20,720	15,520	11,050			
CO0061-D	H-3400 CC	+35°C	126,820	107,180	89,850	74,640	61,380	49,910	40,030	31,570	24,360	18,230	12,990			
		+45°C	107,370	90,480	75,620	62,680	51,420	41,710	33,360	26,190	20,020	14,700	10,020			
CO0062-D	H-3000 CS	+35°C				83,680	69,040	56,320	45,350	35,970	27,980	21,230	15,530			
		+45°C				70,140	57,720	46,960	37,710	29,800	23,030	17,250	12,280			
CO0063-D	H-3500 CC	+35°C	140,950	119,120	98,850	82,950	68,220	55,460	44,480	35,090	27,080	20,260	14,430			
		+45°C	119,320	100,540	84,040	69,640	57,140	46,350	37,070	29,110	22,260	16,340	11,140			
CO0064-D	H-3500 CS	+35°C				91,600	75,620	61,740	49,750	39,480	30,730	23,300	17,020			
		+45°C				77,540	63,850	52,000	41,780	33,020	25,520	19,090	13,540			
CO0065-D	H-4000 CC	+35°C	157,850	133,540	112,080	93,250	76,840	62,620	50,380	39,900	30,970	23,350	16,840			
		+45°C	133,610	112,770	94,470	78,470	64,570	52,550	42,190	33,260	25,560	18,860	12,950			
CO0066-D	H-4000 CS	+35°C				99,390	82,050	66,990	53,990	42,840	33,340	25,290	18,470			
		+45°C				84,130	69,290	56,420	45,340	35,830	27,690	20,710	14,690			
CO0067-D	H-4500 CC	+35°C	169,460	143,510	120,600	100,510	83,000	67,840	54,790	43,620	34,110	26,010	19,100			
		+45°C				84,130	69,290	56,420	45,340	35,830	27,690	20,710	14,690			



Your partner for used commercial and
industrial refrigeration equipment
